

B.W. SINCLAIR, INC.
P.O. Box 1111
Wichita Falls TX 76307-1111
Phone 940/766-2556
Fax 940/766-0430

FLEXIBLE BELT-BOTTOM SCREWS

Data Sheet 101.03

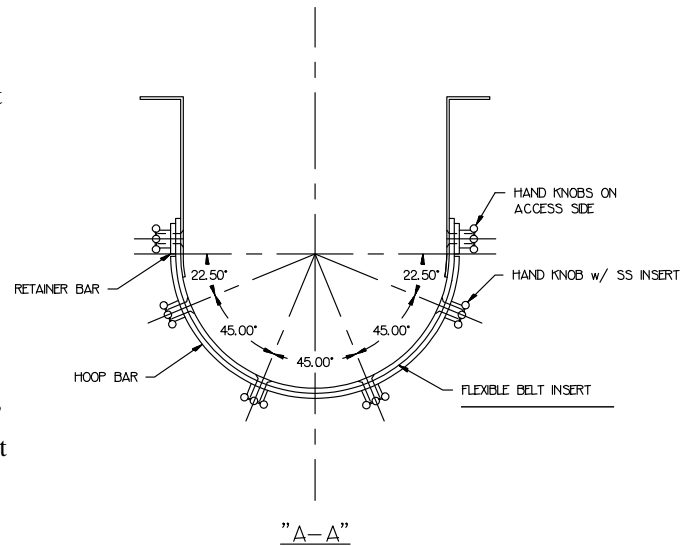
The **SINCLAIR** Flexible Belt-Bottom Screw is engineered to provide a “non-static” conveying or feeding surface which drops away rapidly for service or cleanout. Because a rotating helix tends to transport bulk material with a “surge” motion, the loaded belt section “flexes.” Since the belt does not offer a static surface, material which would tend to cling to steel housings “breaks away” with the surge action, and the flexible housing becomes largely self-cleaning.

The Retainer Bars and Hoop Bars remove quickly by unscrewing the Hand Knobs, so access to the internal components is rapid. Since the pliable belt material saddles over the steel trough and is “pinched” by the retainers, the resulting seal is excellent. The belt covers which come in contact with the conveyed product can be selected to provide impact and abrasion resistance, reduced coefficient of friction, FDA-rating and chemical compatibility with the conveyed product.

TYPICAL APPLICATIONS:

- Drop-Bottom required for cleanout
- Abrasive products which require an easily-replaceable wear surface
- Products which adhere to the inner housing
- Hygroscopic and compressible products which benefit from the “flex relief”
- Food, Chemical and Pharmaceutical applications

Replacing the Belt Bottom sections is fast and



Flared and Tubular trough configurations also available

economical. When the Retainer and Hoop Bars are removed, the Belt Bottom drops away easily. Worn or contaminated sections can be replaced with readily-available new pieces.

The drop sections can be interlocked with safety instrumentation to prevent operator exposure to the rotating helix. The **SINCLAIR Flexible Belt Bottom Screw** --- *technology applied to solve problems.*

